

Ground Protection MATS

SUSTAINABLE

LONG LIFE

LOW COST

Our Mats are the new generation of environmentally friendly and economically advantageous boards which is made from Silicopolymer that combines the functional advantages of steel and other plastic boards.

Mats

Dimensions (cm)	Weight (kg)	Load Bearing (t)*		
		Paved	Unpaved dry	Unpaved wet
243 x 123 x 1.5	44	130	60	25
243 x 123 x 2.0	58	180	90	30
300 x 100 x 1.5	45	130	60	25
300 x 100 x 2.0	60	180	90	30

*Depending on the ground conditions and load characteristics



Heavy-Duty Mats

Dimensions (cm)	Weight (kg)	Load Bearing (t)*		
		Paved	Unpaved dry	Unpaved wet
300 x 100 x 4	120	270	135	100
300 x 100 x 8	240	360	180	150

*Depending on the ground conditions and load characteristics



Packaging and loading specifications

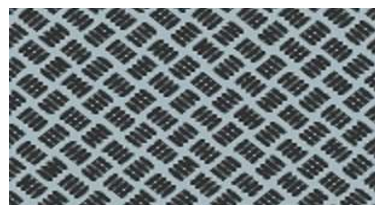
Standard Truck / 40ft Container				
Dimensions (cm)	Pcs / stack	Stacks	Total (pcs)	Total Net (kg)
243 x 123 x 1.5	40	10	400	17,600
243 x 123 x 2.0	35	10	350	20,300
300 x 100 x 1.5	40	12	480	21,600
300 x 100 x 2.0	35	11	385	23,100
300 x 100 x 4.0	17	11	187	22,440
300 x 100 x 8.0	8	12	96	23,040

*This values may change depending on the type of truck / container.

Benefits

- Extremely durable and impact-resistant (nearly unbreakable)
- Made of recycled plastics
- Diverts plastic waste from incineration or landfill
- Weatherproof
- Chemical-resistant
- Easy to clean
- Anti-slip surface structure
- Lightweight compared to steel
- Customizable branding/logo
- Multiple sizes available

GENERAL SPECIFICATIONS	
Temp Range	- 40°C - +70°C
Burn Index	B1
Color	Black – Grey
Material	PE Base Composite



Texture Pattern

Physical & Mechanical Properties of Silicopolymer Mats

Property	Standard	Units	Result
Density	ISO 1183-2	g/cm3	0,900– 1,200
Water Absorption	ISO 62	%	0,06
Surface Hardness	ISO 59	Shore D	62
Tensile Strength	ISO 527	MPa	21,9
Elongation at Break	ISO 527	%	5,3
Impact Resistance	ISO 179	kJ/m2	8,55
Bending Resistance	ISO 178	MPa	No Break
Compression(Pressure)Resistance	ISO 604	MPa	> 58
Impact Elasticity	ISO 4662	%	15
Heat Transfer Coefficient	ISO 8302	W/m.K	0,18
Electric Resistivity	ISO 257	MOhm	7,5
Melting Point	ISO 11357	C	121

Chemical Resistance of Silicopolymer Materials

Chemicals	Very Good	Good	Average	Bad
Mineral Oil	X			
Acetone	X			
Acetic Acid	X			
Ammoniac			X	
Detergents		X		
Ethyl Alcohol		X		
Methyl Alcohol		X		
Glycerine	X			
Toluene		X		
Sodium Hydroxide			X	
Hydrochloric Acid	X			
Sulphuric Acid		X		
Sodium Hypochlorite		X		

Oil & Gas / Energy Sector

- Rig site preparation (pad stabilization)
- Access roads for heavy vehicles and equipment
- Pipeline and cable crossings
- Tank farm containment zones
- Support areas for coiled tubing, frac units, or well testing
- Offshore platform decking



Construction & Infrastructure

- Temporary access roads for cranes, concrete trucks, and machinery
- Ground stabilization for remote or off-road projects
- Laydown areas for equipment and materials
- Temporary flooring for construction camps and workforce housing
- Foundation support for modular buildings or mobile offices



Civil Defense & Emergency Response

- Emergency vehicle access in unstable terrain (flooded or sandy)
- Setup of mobile command centers or staging areas
- Temporary helipads and evacuation zones
- Access during disaster response (floods, fires, earthquakes)
- Tent bases in camps
- Drone runways



Agriculture & Events

- Access roads through muddy fields or farmland
- Flooring and ground protection for outdoor exhibitions or public events
- Pathways for foot traffic and vehicles during festivals or fairs
- Stadium and Arena floorings during events



Marine & Coastal Zones

- Jetty and port access platforms
- Walkways in wet, waterlogged, or intertidal areas
- Shoreline construction and marine logistics
- Support for dredging or barge-loading zones
- Cargo Hold walls/bottom protection for ships and vessels



Mining & Industrial

- Heavy equipment movement in mines or quarries
- Base for crushers, screening plants, or portable generators
- Temporary platforms in remote exploration sites

Environmental & Utility Services

- Ground protection during soil remediation
- Access for utility trucks and borehole equipment
- Minimal surface disturbance in protected or natural zones